



Danimex™
WHEN YOU NEED TO TALK



Analogue Radio Linking & Gateway Solutions

Danimex offers many linking and gateway solutions to link your analogue system to other technologies.

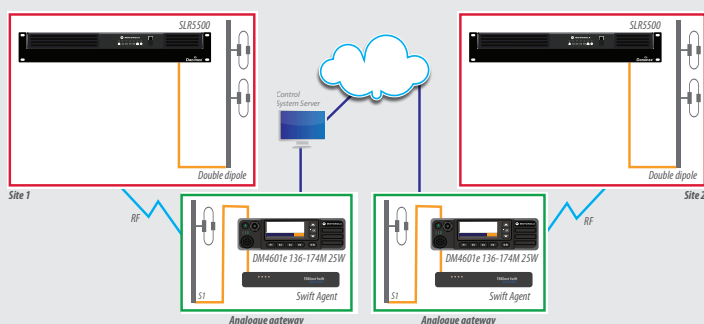
Linking sites and cities over IP:

SOLUTION 1: TRBOnet Linking Radio to Radio with IP

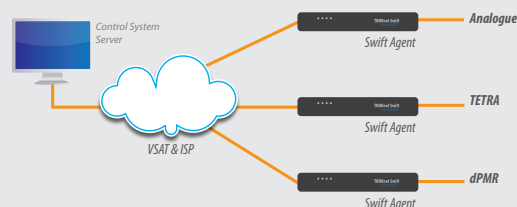
Benefits:

- » Possible for country wide
- » Everything connected to everything

Option A



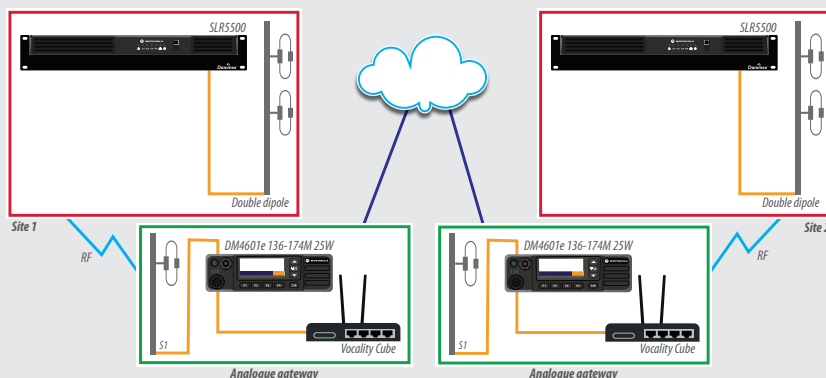
Option B



SOLUTION 2: Vocality Gateways Analogue to 'other network types'

Benefits:

- » Possible for country wide
- » Everything connected to everything



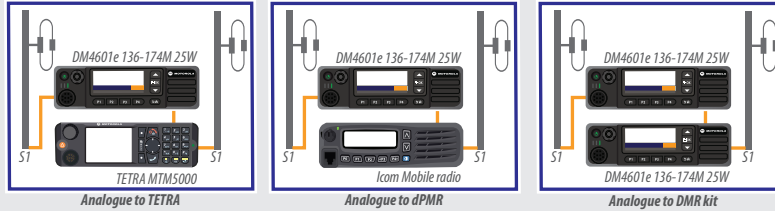


Interconnecting different types of networks to act as one:

SOLUTION 3: Back-to-back gateways. A straightforward method to bridge a single voice channel between different radio network types (DMR, TETRA, analogue, or dPMR) operating on the same site.

Benefits:

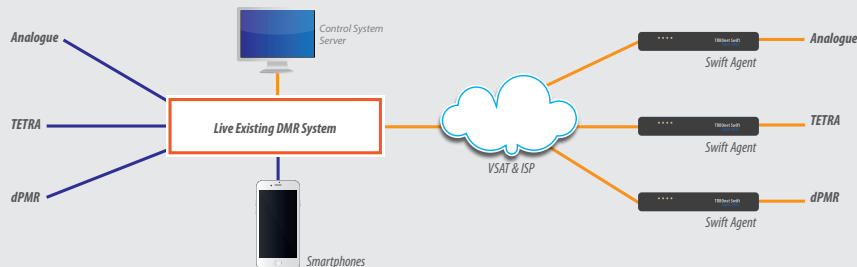
- » Simple no IP
- » No dispatch required
- » Cost effecting
- » Low power required



SOLUTION 4: Gateways Higher functionality or when IP is needed to cover distances between bridged locations

Benefits:

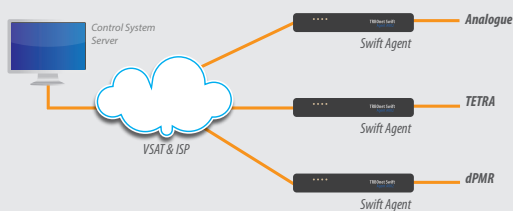
- » One dispatcher for all
- » Full benefits of DMR trunk system
- » Possible for country wide
- » Everything connected to everything
- » SmartPTT and TRBOnet solutions available
- » Direct upgrade available to full DMR service pack



SOLUTION 5: Remote operation centres or when IP is needed to cover distances between bridged locations

Benefits:

- » One dispatcher for all
- » Possible for country wide
- » Everything connected to everything



Please note, these solutions are designed for the user radio to be in analogue mode

In this document, the definition of linking is same network to same network type. The definition of gateway is between two different network types.